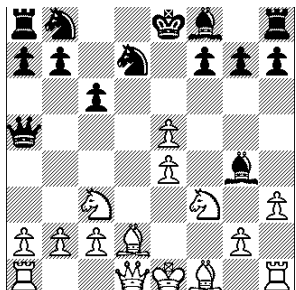


**Calvin Blocker, IM** (2451) vs. **David Friedman** (1972)

Q-Chess at Vivacity, Beachwood, OH (September 21, 2003)

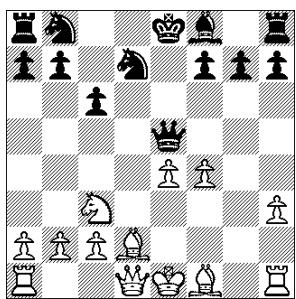
**1. e4 d6 2. d4 Nf6 3. Nc3 c6 4. f4 Qa5 5. Bd2 e5 6. Nf3 Bg4 7. dxe5 dxe5  
8. fxe5 Nfd7 9. h3 Bxf3?!**



9. ... Bh5 (or 9. ... Be6) is a better alternative, for example  
10. Bd3 Nxe5 11. Qe2 (11. 0-0 Nxf3) Nbd7  
or 10. g4 Bg6 11. Bc4 Nxe5 12. Qf3 Nd7 13. 0-0-0 Rd8 and 14. ...  
Bb4

It seems that 9. ... Bxf3 is opens white king, however undeveloped black pieces can not take advantage of the situation. At the same time, mobile pair of center pawns along with two bishops allows white to obtain advantage.

**10. gxf3 Qxe5 11. f4 Qf6?**



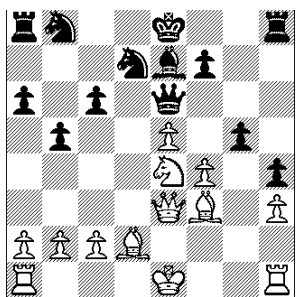
Black queen is getting on the way of white pawns that will create different combination motifs. Shortly black will waste time, since his queen will run away from moving forward white pawns.

The better alternative is 11. ... Qd4, for example  
12. Qg4 Nb6 (taking under control c4 square) 12. 0-0-0 Nbd7

**12. Qg4 h5 13. Qg3 b5?**

Black is behind in development and should put the foremost efforts to finish developing pieces and castle. Black's position is hard to defend, still 13. ... Nb6 was better alternative.

**14. e5 Qe6 15. Bg2** (threatening 16. Nxb5) **a6 16. Ne4 h4 17. Qe3 Be7 18. Bf3  
g5?** (A final mistake in a bad position)



**19. f5! Qxf5 20. Bg4 Qf4?**

20. ... Qg6, would allow to prolong the game

**21. Qe2 Qe5** (black has no other way to save the queen) **22. Bc3 Qd5 23. Rd1 Qxa2  
24. Bxh8 Nb6 25. 0-0 Kf8 26. Nd6 Kg8 27. Qe7 Kxh8 28. Qf8** and black  
resigns.